

# **TABLE OF CONTENTS**

---

## **WATER UTILITY DETAILS:**

✍ BUTTERFLY VALVE INSTALLATION DETAIL.....	W-1
✍ FIRE HYDRANT DETAIL.....	W-2
✍ SINGLE WATER SERVICE & METER CONNECTION DETAIL.....	W-3
✍ DOUBLE WATER SERVICE & METER CONNECTION DETAIL.....	W-4
✍ BLOW-OFF CONNECTION (TYP).....	W-5
✍ EXTENSION STEM DETAIL.....	W-6
✍ GATE VALVE INSTALLATION DETAIL.....	W-7
✍ TYPICAL BLOW-OFF DETAIL.....	W-8
✍ WATER MAIN TERMINATION DETAIL.....	W-9
✍ DETAIL OF WATER VALVE MARKER.....	W-10
✍ AIR RELEASE CONNECTION DETAIL (TYP).....	W-11
✍ CONCRETE COLLAR FOR VALVE BOX (TYP).....	W-12
✍ TYPICAL BLOCKING DETAIL.....	W-13

## **SEWER UTILITY DETAILS:**

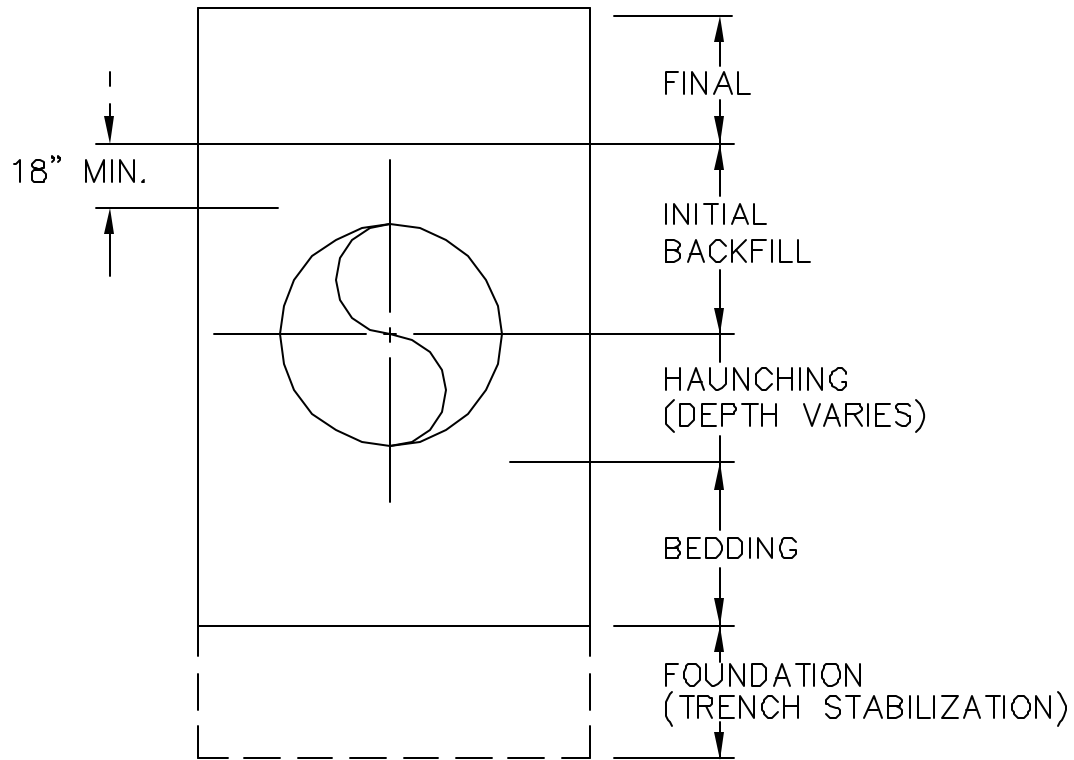
✍ TUNNEL DETAIL.....	S-1
✍ PRECAST CONCRETE MANHOLE DETAIL.....	S-2
✍ DIRECTION OF FLOW IN A MANHOLE DETAIL.....	S-3
✍ SERVICE CONNECTION DETAIL.....	S-4
✍ RUBBER BOOT DETAIL.....	S-5
✍ CLEANOUT DETAIL.....	S-6
✍ WATERSTOP COLLAR DETAIL ~ A.....	S-7
✍ WATERSTOP COLLAR DETAIL ~ B.....	S-8
✍ CONCRETE REPLACEMENT DETAIL.....	S-9
✍ ASPHALT REPLACEMENT DETAIL.....	S-10
✍ CONCRETE ENCASEMENT.....	S-11
✍ AUTOMATIC AIR RELEASE VALVE DETAIL.....	S-12
✍ DOGHOUSE MANHOLE DETAIL.....	S-13
✍ METALLIC TAPE LOCATOR DETAIL.....	S-14

## **OPEN TRENCH DETAILS:**

✍ TRENCH TERMINOLOGY DETAILS.....	OT-1
✍ PIPE BEDDING AND HAUNCHING DETAILS.....	OT-2

## **CROSSING DETAILS:**

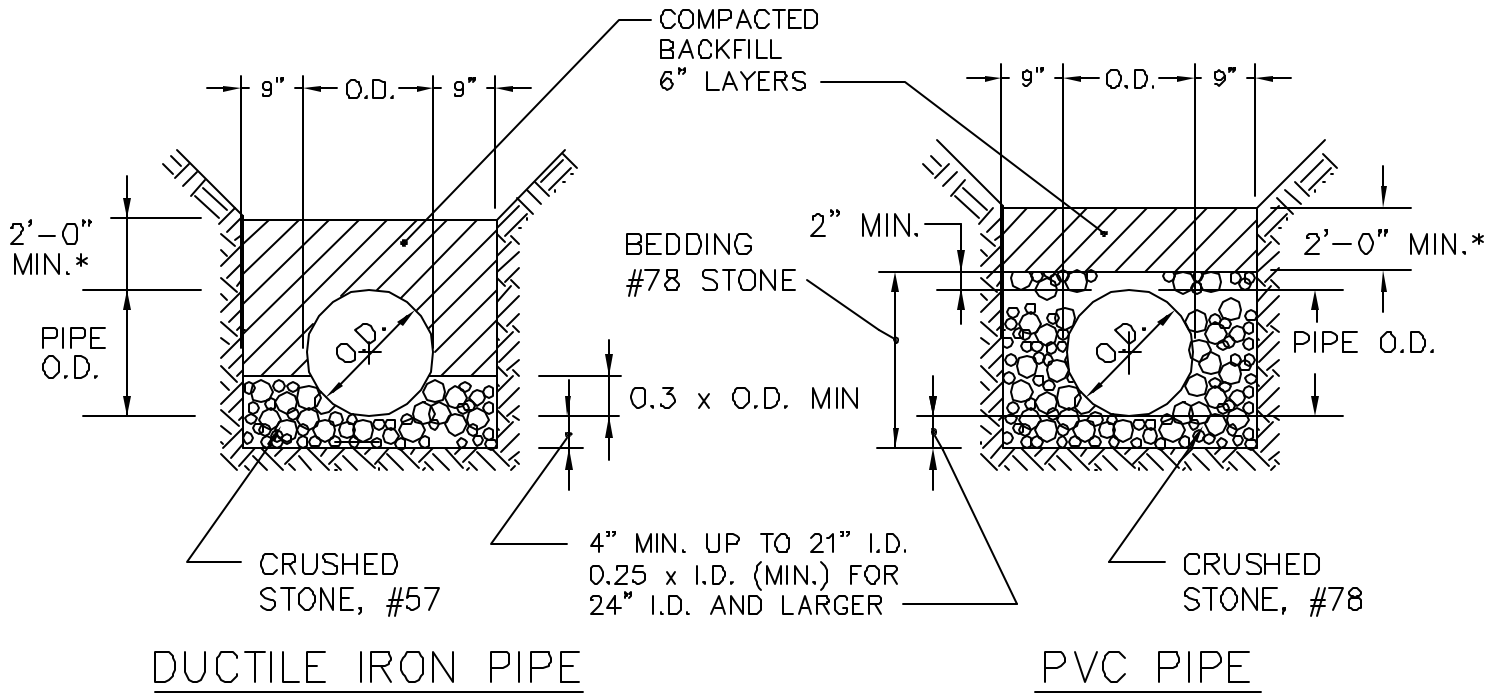
✍ CONCRETE COLLAR DETAIL.....	CR-1
✍ PIPE ANCHORAGE DETAIL.....	CR-2
✍ PIER FOOTING DETAIL.....	CR-3
✍ CONCRETE PIER DETAIL.....	CR-4
✍ PIPE STRAP DETAIL.....	CR-5
✍ CONCRETE SADDLE ON PILES DETAIL.....	CR-6



NOTE: SEE SPECIFICATIONS AND PIPE  
 BEDDING AND HAUNCHING DETAILS  
 FOR DIMENSIONS AND MATERIALS

STATUS	BY	APPROVED	DATE	MACON WATER AUTHORITY STANDARD DETAILS	RECOMMENDED BY THE MACON WATER AUTHORITY ENGINEERING DEPT.
ORIGINAL					
REVISION					
				TRENCH TERMINOLGY DETAIL N.T.S.	DRAWING NUMBER OT-1

\*SIDES OF TRENCH TO BE VERTICAL FOR MINIMUM 2' ABOVE TOP OF PIPE.

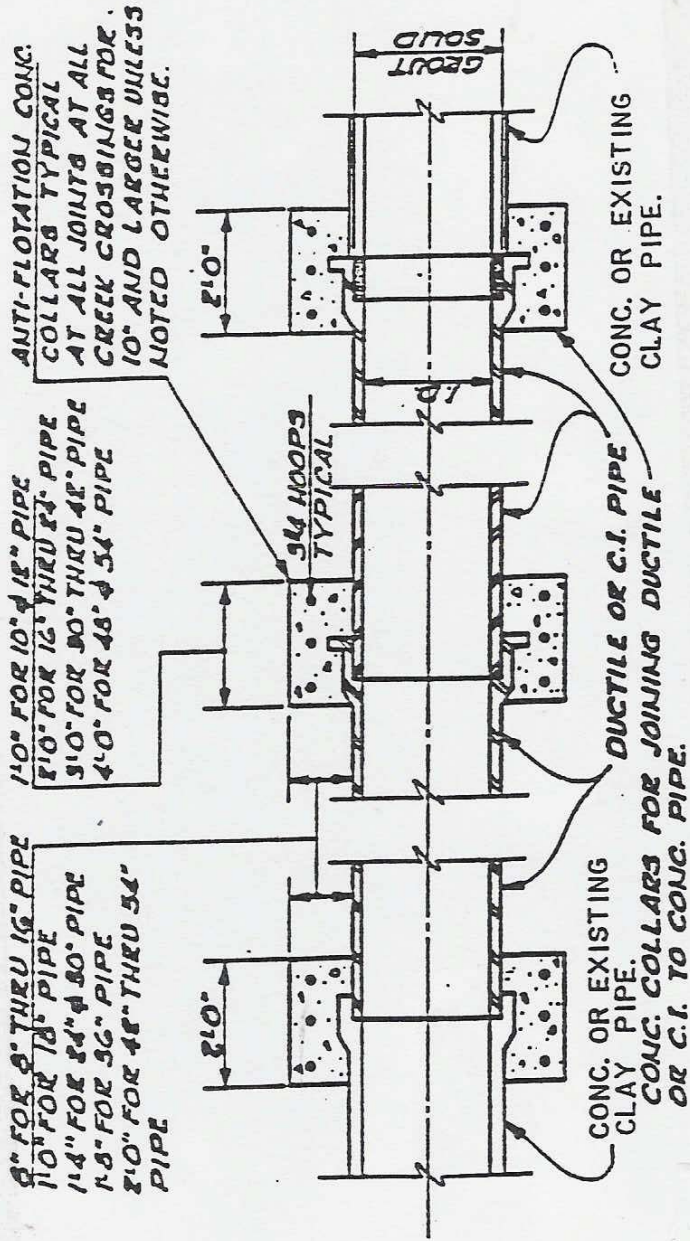


BEDDING MATERIAL USE:

#57 STONE FOR D.I.P.

#78 STONE FOR PVC

STATUS	BY	APPROVED	DATE	MACON WATER AUTHORITY STANDARD DETAILS	RECOMMENDED BY THE MACON WATER AUTHORITY ENGINEERING DEPT.
ORIGINAL					
REVISION					
				PIPE BEDDING AND HAUNCHING DETAILS	
				N.T.S.	
					DRAWING NUMBER OT-2



STATUS	BY	APPROVED	DATE
ORIGINAL			
REVISION			

Macon Water Authority Standard Details

Concrete Collar Details

N.T.S.

RECOMMENDED BY THE MACON WATER AUTHORITY ENGINEERING DEPT.

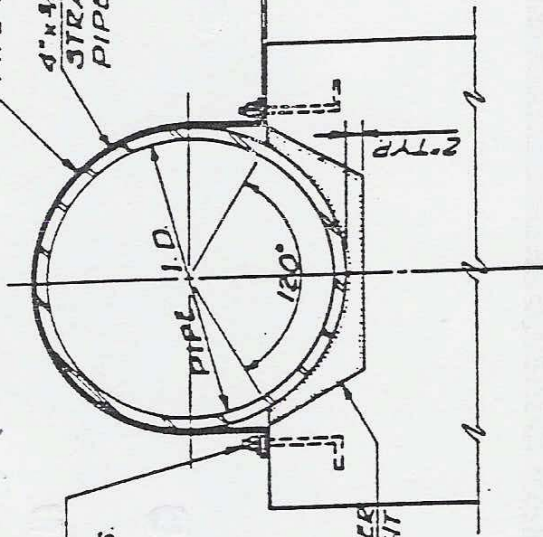
DRAWING NUMBER

CR-1

4" X 3/16" STAINLESS STEEL  
PIPE STRAP

4" X 1/4" NEOPRENE  
STRAP AROUND  
PIPE (360°)

3/4" x 1 1/2" A.B.  
4" TH. 2" PROJ.  
W/ 3" WASHERS.



1:2 GROUT AFTER  
PIPE IS BROUGHT  
TO LINE AND  
GRADE

1/8" BEFORE  
NUT IS TIGHT-  
ENED.

STATUS	BY	APPROVED	DATE
ORIGINAL			
REVISION			

MACON WATER AUTHORITY STANDARD DETAILS

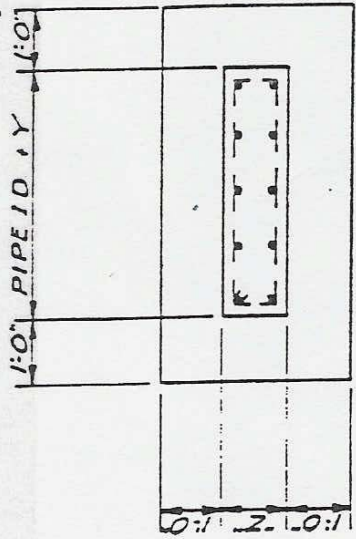
PIPE ANCHORAGE DETAIL

N.T.S.

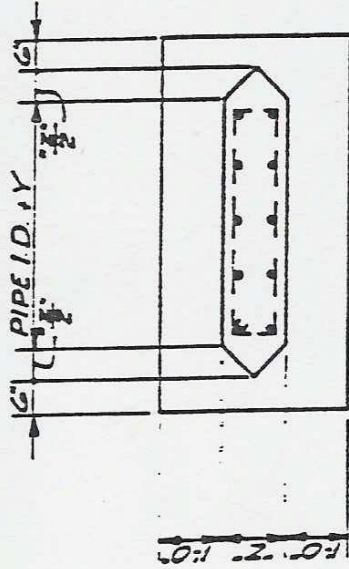
RECOMMENDED BY THE MACON  
WATER AUTHORITY ENGINEERING  
DEPT.

DRAWING  
NUMBER

CR-2



PLAN - OVERLAND

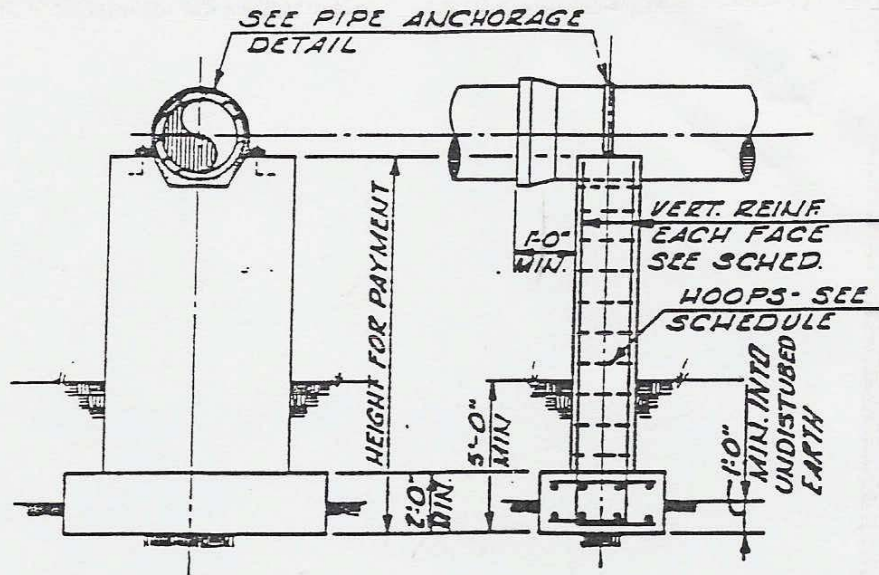


PLAN - IN STREAM

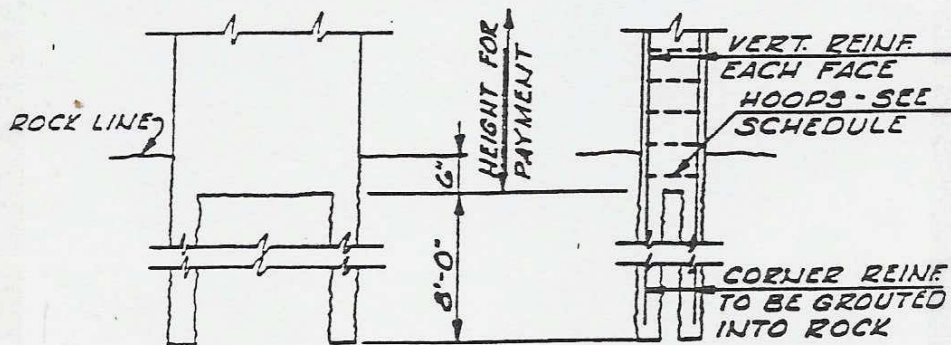
PIPE I.D.	Y	Z	VERT. REINF. @ 12" o.c.	HOOPS @ 12" o.c.
8" - 24"	24"	12"	#5	#3
27" - 36"	24"	18"	#6	#4
48" - 48"	36"	24"	#6	#4
54"	54"	24"	#6	#4

NOTE:  
 FOOTING REINF. SAME AS VERT. REINF. EA. WAY TOP & BOTTOM.  
 WHEN BASE IS IN ROCK OMIT FOOTING & GROUT VERTICAL CORNER BARS " INTO ROCK.

STATUS	BY	APPROVED	DATE
ORIGINAL			
REVISION			
N.T.S.			
MACON WATER AUTHORITY STANDARD DETAILS			
PIER FOOTING DETAIL			
RECOMMENDED BY THE MACON WATER AUTHORITY ENGINEERING DEPT.			DRAWING NUMBER
			CR-3

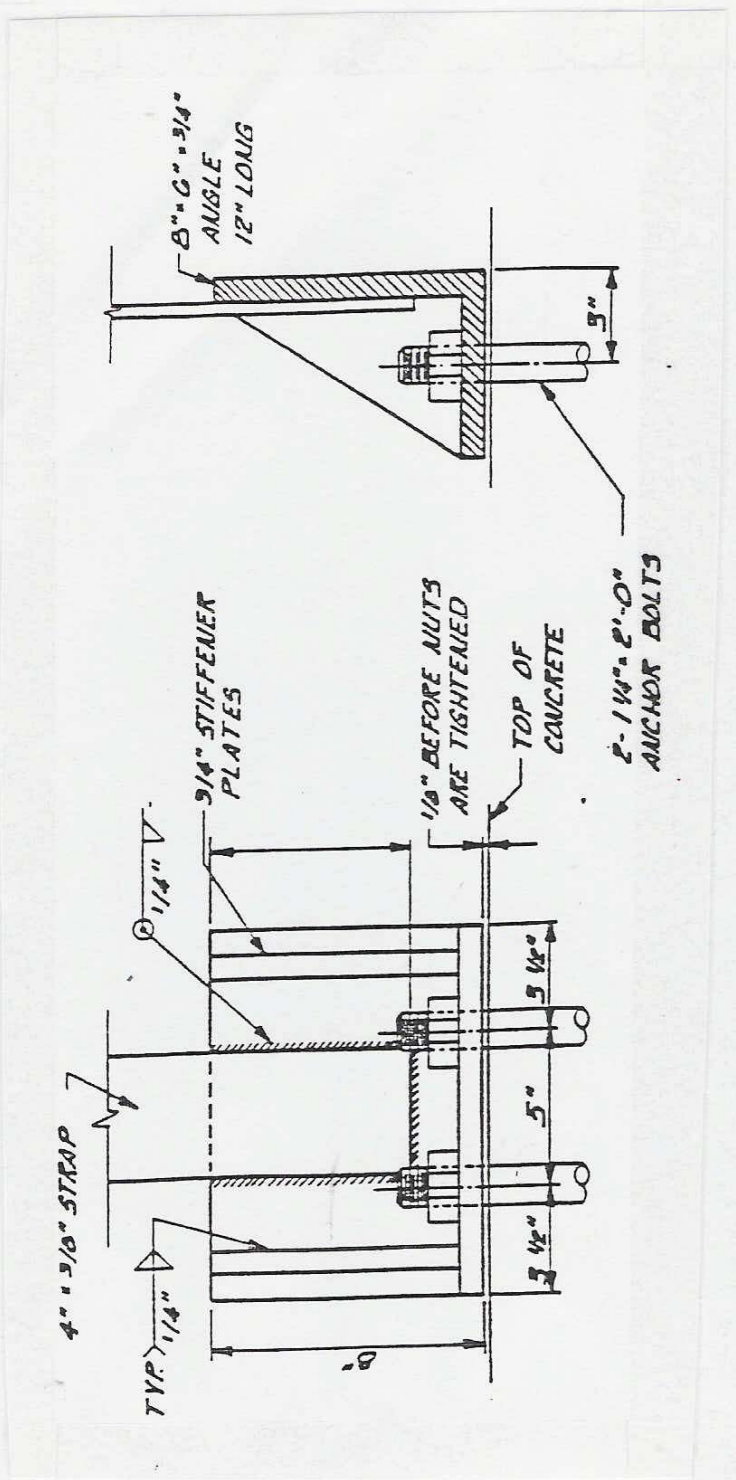


FOOTING IN EARTH



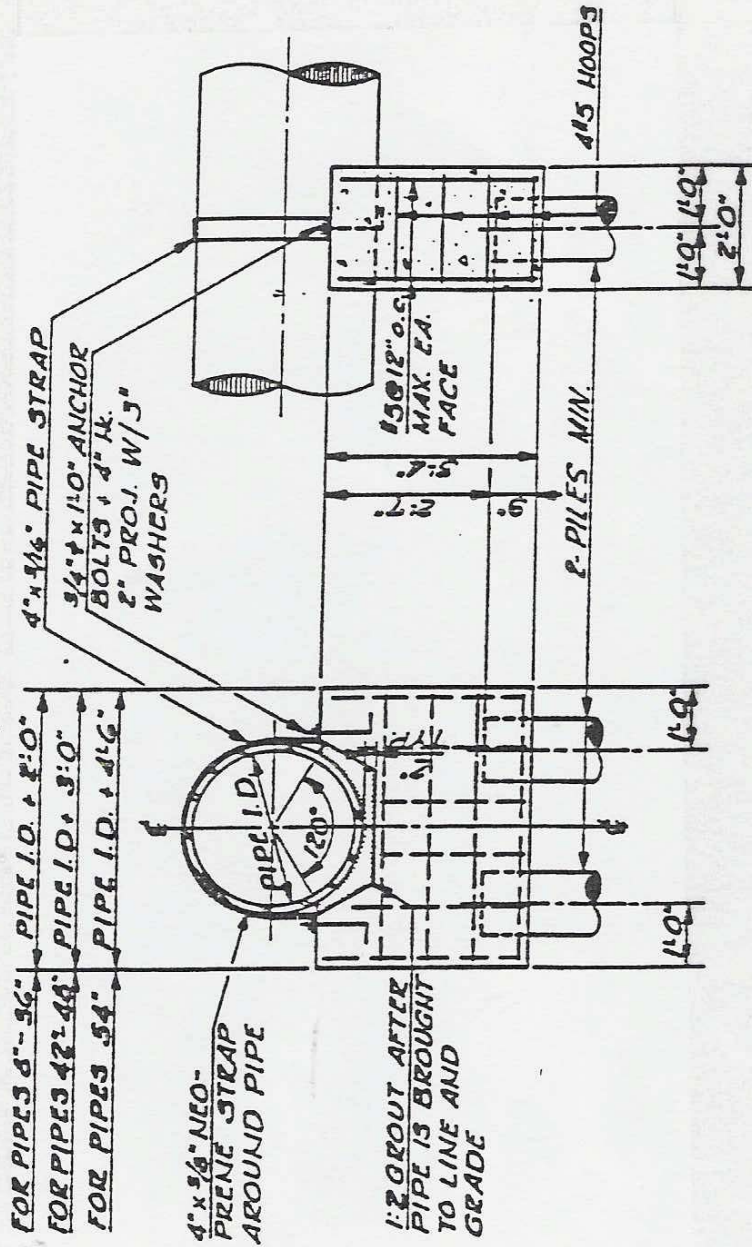
FOUNDATION IN ROCK

STATUS	BY	APPROVED	DATE	MACON WATER AUTHORITY STANDARD DETAILS	RECOMMENDED BY THE MACON WATER AUTHORITY ENGINEERING DEPT.
ORIGINAL					
REVISION					



STATUS	BY	APPROVED	DATE	MACON WATER AUTHORITY STANDARD DETAILS	RECOMMENDED BY THE MACON WATER AUTHORITY ENGINEERING DEPT.
ORIGINAL					
REVISION				PIPE STRAP DETAIL	DRAWING NUMBER
				N.T.S.	CR-5





STATUS	BY	APPROVED	DATE
ORIGINAL			
REVISION			

MACON WATER AUTHORITY STANDARD DETAILS  
 CONCRETE SADDLE ON PILES  
 N.T.S.

RECOMMENDED BY THE MACON WATER AUTHORITY ENGINEERING DEPT.  
 DRAWING NUMBER CR-6